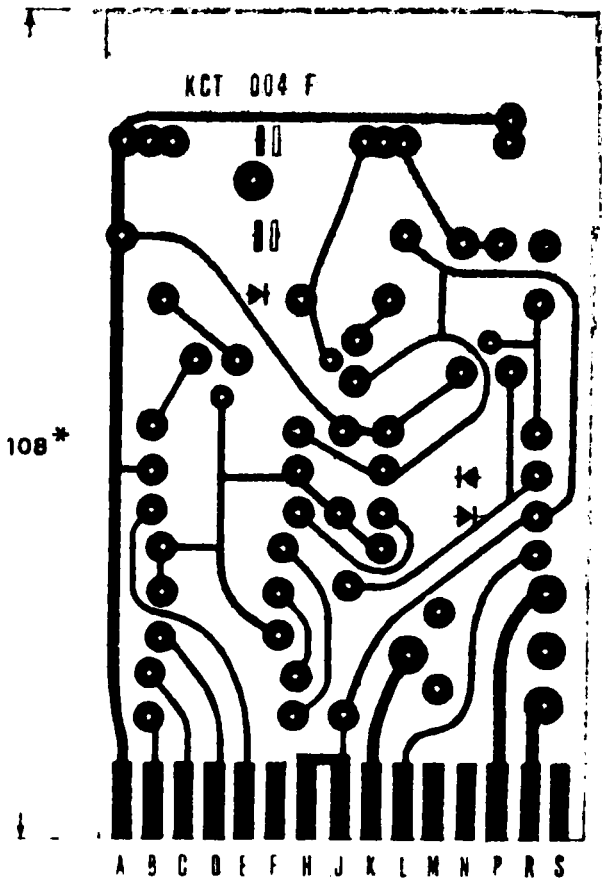


S R P N L K J M F E D C B A



KCT 004 F

108\*

A B C D E F H J K L M N P R S

635\*

SCR	11 T4	SES
T1	2N1711	SGS
T2	2N3819	TEXAS INSTRUMENTS
RY	1051 12V/DC	OMRON
P	5 meg ohm	
R1	1K	1/2W
R2	8K2 /	1/2W
R3	8K2 /	1/2W
R4	68 ohm /	1/2W
R5	22 K /	1/2W
R6	8K2 /	1/2W
R7	1K5 /	1/2W
R8	100 ohm /	1/2W
C1	0.022 mfd /	250v
C2	0.022 mfd /	250v
C3	100 mfd /	16 v
C4	160 mfd /	25 v
D1	1N5060	YTT
D2	1N5060	YTT
D3	1N5060	YTT
Z1	ZG 5.6	YTT
Z2	ZG 5.6	YTT

**geveke**

MOTORCONTROL KCT 004F

Geveke Electronics  
and Automation  
INTERNATIONAL

WERK No

SCHAAL

15.8.78

A4\_KC/5010/T

AANTAL BI

BLAD

DIPLOMA 1978